

SKI ITALY

DOLOMITES MOUNTAINS – The world's largest skiing region!



- ▶ Spectacular scenery
- ▶ Modern infrastructure
- ▶ Gourmet food & wine
- ▶ Traditional atmosphere
- ▶ Guided & Independent Weeks
- ▶ Adventurous ski safaris

40 YEARS IN THE SKI ITALY BUSINESS
www.dolomitesskitours.com.au



Simply the world's largest ski region

DOLOMITI



Col Rodella-Campitello



Arabba



Marmolada Glacier



The extraordinary Dolomites

Millions of years ago coral reefs were forced through the tops of mountains to create the breathtaking spires and cliffs that dominate the Dolomites Mountains of northern Italy.

The spectacular natural beauty of the Dolomites provides the perfect backdrop for an unforgettable skiing holiday. With a seemingly endless network of ski lifts, finely groomed trails and charming villages, the Dolomites Mountains are an eye-opener for visitors.

The Italian approach to skiing is a relaxed and friendly one. Skiing is only part of the Dolomites experience – food, wine, lunch and friends are equally important.

With over 40 years of guiding skiers throughout this breathtaking region, we have the knowledge and experience to make your visit memorable and enjoyable.

World-class facilities...old-world charm

The Dolomites is the largest interconnected ski region in the world.

Nowhere else will you find 450 lifts, including fast and modern gondolas, cablecars and high-speed chairs, all on a single and affordable lift pass. The ski lifts are spread over 12 valleys and 45 ski resorts! Over 1,200km of marked runs, as well as countless off-piste options, make this a skier's paradise.

Despite the abundance of state-of-the-art infrastructure, the region's charming, small-village ambience and age-old traditions remain. Nestled in the valleys and towns, centuries-old buildings surround village squares (piazas). Skiers and locals wander cobblestoned streets amid beautifully styled shops and culinary delights.

Let us take care of you

From our base in the classic village of Campitello we explore new mountains and ski areas every day, and you also have ready access to neighbouring villages and facilities.

Our resort hosts will find the best snow and conditions whatever the weather, be it the 12km glacier run of The Marmolada, the sanctuary of Vigo's tree-lined slopes or the screaming descents at Ciampac, Buffaure and Val Gardena's Downhill Course.

Around the famous Sella Ronda route we ski anything from 45–75km in a day without needing to catch the same lift twice!

We aim to take the hassles out of your holiday: all transfers, lift tickets, accommodation and resort hosts are included in our ski packages.

Why go with Dolomites Ski Tours?

Dolomites Ski Tours has been offering ski holidays in Italy for 40 years. Importantly, the people you deal with in Australia are the ones who meet, greet and ski with you in the Dolomites!

The closest gateway city for the Dolomites is Venice, but plenty of visitors reach us via Rome, Milan and Innsbruck (Austria). Trains run from these cities to the mountain town of Bolzano, located an hour below the mountains. We offer group transfers to the mountains from Venice Airport and also from Bolzano.

Our staff can help you with all aspects of skiing, travelling, shopping, eating... We back our bookings with travel tips, resort maps, connection timetables and more.

Solo travellers

'O solo you'o? Non problema. If you're travelling alone and wish to ski in the Dolomites, why not join one of our Guided Ski Weeks in Campitello? Join a ski group and enjoy the best of the Dolomites in the company of other skiers. Single rooms are available in the Campitello hotels.



DOLOMITES



Val Gardena



GUIDED SKI WEEKS

FROM JANUARY TO MARCH

These weeks are the ultimate way to experience everything great about the Dolomites – just ask anyone who's been on one!

Based in our village of Campitello, we head off each day to explore different areas within the closest five valleys. We discover new resorts, spectacular mountains, beautiful valleys and a seemingly endless number of groomed runs.

The groups average six skiers per guide and we ski at a comfort level to suit the group. Groups can be mixed and matched after each day, as required or as desired.

Our guides will show you the best areas (for the prevailing weather) and locations, plus many mountain or village restaurants to ensure you enjoy your week to the fullest.

Highlights of the week include the day-long Sella Ronda route (45–75km), skiing past a 16th century castle in Val Gardena, the thrilling downhill course at St Cristina, the gentle runs of Corvara, the steeper runs of Arabba, views of the inspiring Marmolada Glacier and special morning and lunch stops no matter the location.

SKIER ABILITY:

Strong intermediate – skiing confidently on most runs.

INCLUSIONS:

6 days' guiding with Australian ski guides. Ski different ski areas and hundreds of runs, including the Sella Ronda circuit.

PRICE: \$1320

Simply add this to any accommodation in Campitello/Canazei.

INDEPENDENT SKI WEEKS (Campitello)

A weekly package in the village of Campitello includes your accommodation, 6-day ski pass, return transfers from Bolzano and the expert services of our resort hosts. Such services include being met on arrival and escorted to your accommodation, and assistance with arrangements for ski hire, ski lockers and ski school lessons.

You'll receive a detailed Information Kit upon arrival to help enhance your stay. During the week there are fun après ski get-togethers. Our resort hosts are there to ensure you have a great ski holiday day or night. All accommodation bookings are backed up with detailed information on Campitello and connection and transfer details.



CAMPITELLO

The heart of The Dolomites

Campitello di Fassa (1,450m) is our Italian "headquarters". Most of our clients stay in this village. It's a typical alpine resort of the Fassa Valley, in the heart of the Dolomites. It provides access to everything the Dolomites has to offer. A NEW gondola takes us 1,000 vertical metres to the Sella Ronda ski region and its 200 lifts. Campitello retains its original charm and ambience but still offers the facilities and luxuries of a modern ski resort: excellent hotels, apartments, restaurants, cafes and shops.

There are a number of specialty shops, including a supermarket, bank/ATM and a variety of ski shops and boutiques. Enjoy the afternoon sun at one of the many outdoor cafes and join us for evenings at the Tobia Bar.

Nightlife revolves around several village bars and a range of restaurants, with other choices in villages just minutes up or down the valley.

SKI FACTS

Elevation: Top 2,950m. Base 1,450m.

Vertical: 1,500m. Longest run 7km.

Lifts (Fassa Valley): Including 4 cablecars, 6 gondolas and 15 quad/6-seater chairs.

Slopes: Beginner 20%, Int. 45%, Adv. 35%

Ski Hire: Skis, boots, poles from \$290/week

Ski Lessons: (private) \$95 an hour.



DOLOMITES SKI SAFARIS

(2 DAYS, 1 NIGHT – WEDNESDAY & THURSDAY)

Dolomites Ski Safaris offer a unique skiing experience. The overnight tour takes in some of the most spectacular scenery and skiing in The Dolomites – and we know all the great places to visit.

From Campitello we ski towards Cortina and the high-altitude mountain rifugio (lodge) at Lagazuoi (2,752m), a trip of about 50km! From here we can ski the Col Gallina and Cinque Torri (Five Towers) ski areas above Cortina, with uncrowded runs and wonderful scenery.

At the end of the day we relax over drinks and watch the sun set over the majestic Dolomites from our accommodation at Rifugio Lagazuoi, arguably the most spectacular view in the Dolomites. Later we enjoy a hearty, three-course meal and some of the local wines.

After breakfast the next morning, we are the first to ski the 12km down the Lagazuoi Valley, past frozen waterfalls. We then take a horse-drawn “rope tow” across the valley.

From here we explore the expansive skiing around Alta Badia, including the leg-testing World Cup GS Course at La Villa.

By day’s end we return to Campitello via a different route, either through Val Gardena or Arabba, depending on the best skiing conditions.

SKIER ABILITY: Advanced intermediate; a skier who skis comfortably on most runs.

INCLUSIONS:

- Overnight twin-share accommodation
- Dinner and breakfast
- 2 days’ expert guiding.
- Breathtaking views

CANAZEI

Canazei (1,460m) is in the Fassa Valley and just a few kilometres up the road from Campitello. It’s another classic village with restaurants, cafes, good shopping and relaxing wine bars.

Accommodation is modern and ranges from bed-and-breakfasts, hotels and apartments to 4-star hotels. Access to the mountain is on a high-speed, 15-person gondola that moves 2,400 skiers per hour.

This lift links into the famous Sella Ronda region. Canazei has a home ski trail that arrives on the edge of the historic part of the village.

SKI FACTS

Elevation: Top 2,950m. Base 1,460m.

Vertical: 1,500m. Longest run 7km.

Lifts: (Fassa Valley): Including 4 cablecars, 6 gondolas and 15 quad/6-seater chairs.

Slopes: Beginner 20%, Int. 45%, Adv. 35%

Ski Hire: Skis, boots, poles from \$320/week

Lessons: (private): \$105 an hour.

CORTINA

As Italy’s most fashionable resort, Cortina exudes an international vibe. “Cortina d’Ampezzo”, as it is known locally, is set in a wide valley surrounded by magnificent towering mountains and is perhaps one of the most dramatic of ski towns. It’s no wonder that several James Bond films and Sylvester Stallone’s ‘Cliffhanger’ were filmed in this area.

The main street of Cortina is the Corso Italia. This pedestrian-only street is lined with the most fashionable of shops, hotels, restaurants and cafes. In the afternoons after skiing it comes alive with people promenading (the “passeggiata”), window-shopping and people-watching.

There are five ski areas that make up Cortina, from long cruisey runs up to the World Cup Downhill Course.

SKI FACTS

Elevation: Top 2,930m. Base 1,224m.

Vertical: 1,706m. Longest run 11km.

Slopes: Beginner 25%, Int. 40%, Adv. 35%



ABOUT OUR SKI HOSTS...

Dolomites Ski Tours has long appreciated the benefits of its knowledgeable and fun-loving ski hosts. We know a good ski guide can make or break a holiday in a region as vast as the Dolomites. After all, it’s the guide’s job to ensure you have a great time in this stunning and unique destination. Australian Mario Longhitano is the manager and head guide. Having been there since the ski company’s inception over 40 years ago, Mario has never missed a season. What he doesn’t know about the mountains, resorts and restaurants is probably unknown to most! Martin & Helen Longhitano are long-serving Dolomites guides with many years of experience. Their experience and knowledge goes way beyond the mountains to encompass most aspects of village life and culture. Using our versatile guides we are able to cater for different skiing abilities so that everyone gets the most from their holiday.



Campitello



Campitello Accommodation

Hotels



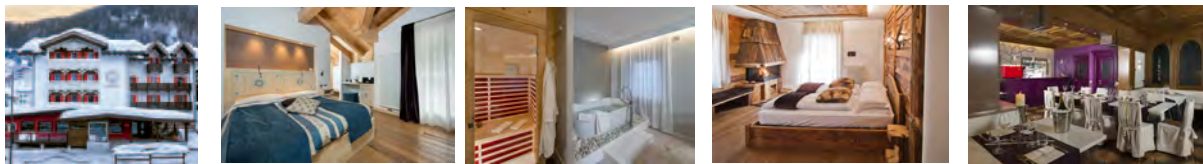
Hotel Alpi (4-star, Db&b)

A quality hotel centrally located. Lounge, restaurant, sauna, Turkish bath and popular bar. Rooms have ensuites, TV, wireless internet, safe & balcony. Buffet breakfast and dinner. Single, double, triple rooms.



Hotel Tobia (3 star b&b)

Located in the centre of Campitello. It has comfortable & spacious rooms with TV & Wi-Fi. Features a newly renovated and popular bar and restaurant. Buffet breakfast included.



Hotel Villa Kofler (4-star, b&b)

Relatively new 4-Star hotel situated in the centre of Campitello. 12 suite rooms of various sizes and styles, most with spa bath, 2-person sauna, lounge, satellite TV and balcony. Hot buffet breakfast provided. Modern Italian restaurant on ground floor.

Apartments



Luisa Apartments

Central location with 1, 2 or 3 bedrooms, 2 bathrooms, kitchen, dishwasher, Wi-Fi, sat TV, living/dining area, internal washing machine, car parking.



Baissa Apartments

Central location with 1 and 2 bedrooms, 2 bathrooms, kitchen, dishwasher, Wi-Fi, sat TV, living/dining area, internal washing machine, car parking.

CAMPITELLO SKI WEEK INCLUSIONS

- 7 nights, Saturday–Saturday accommodation, meals as stated
- 6-day multi area ski pass & heated boot/ski lockers (Campitello) at main lift
- Direct return transfers to Campitello, Canazei from /to Bolzano
- Resort host services and assistance, information kit, met on arrival, resort rep.



Cortina



Canazei

Canazei Ski Weeks

CANAZEI INCLUSIONS

- 7 nights accommodation, Saturday–Saturday, meals as stated
- 6-day multi area ski pass
- Direct return transfers from Bolzano
- Resort host services and assistance, information folder, met on arrival.



Canazei

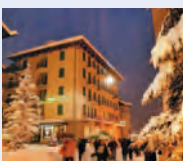
Cortina Ski Weeks

CORTINA SKI WEEKS

7 nights accommodation, Saturday–Saturday, meals as stated.

6-day multi area ski pass

Direct return coach transfers to Cortina from Venice airport.



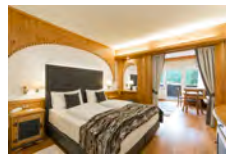
Hotel Cortina (4-Star, DB&B)

One of the best hotels in Cortina. Located on the main pedestrian strip. Recently renovated rooms and suites, plus internet, laundry service, babysitting and wellness centre.



Hotel Villa Neve (3-Star, B&B)

A small, family run hotel located only 50m from the main piazza and cablecar. Rooms have ensembles, telephone & TV. Full breakfast included. Private carpark and garage.



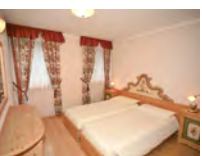
Hotel Croce Bianca (4-star D,b&b)

An excellent, family run hotel in the centre of Canazei. Has several categories of rooms, with ensuite, wireless internet. New swimming pool. Non-smoking rooms. Lounge bar with open fireplace, wine bar, wellness centre. Breakfast & dinner inclusive.



Hotel International (3-star b&b)

Located in the historical part of Canazei. Close to home trail into village and also to the gondola lift. The family-run hotel has a cafe with an outdoor terrace. Serves some of the best ice cream in Canazei.



Maurivan Apartments (Canazei)

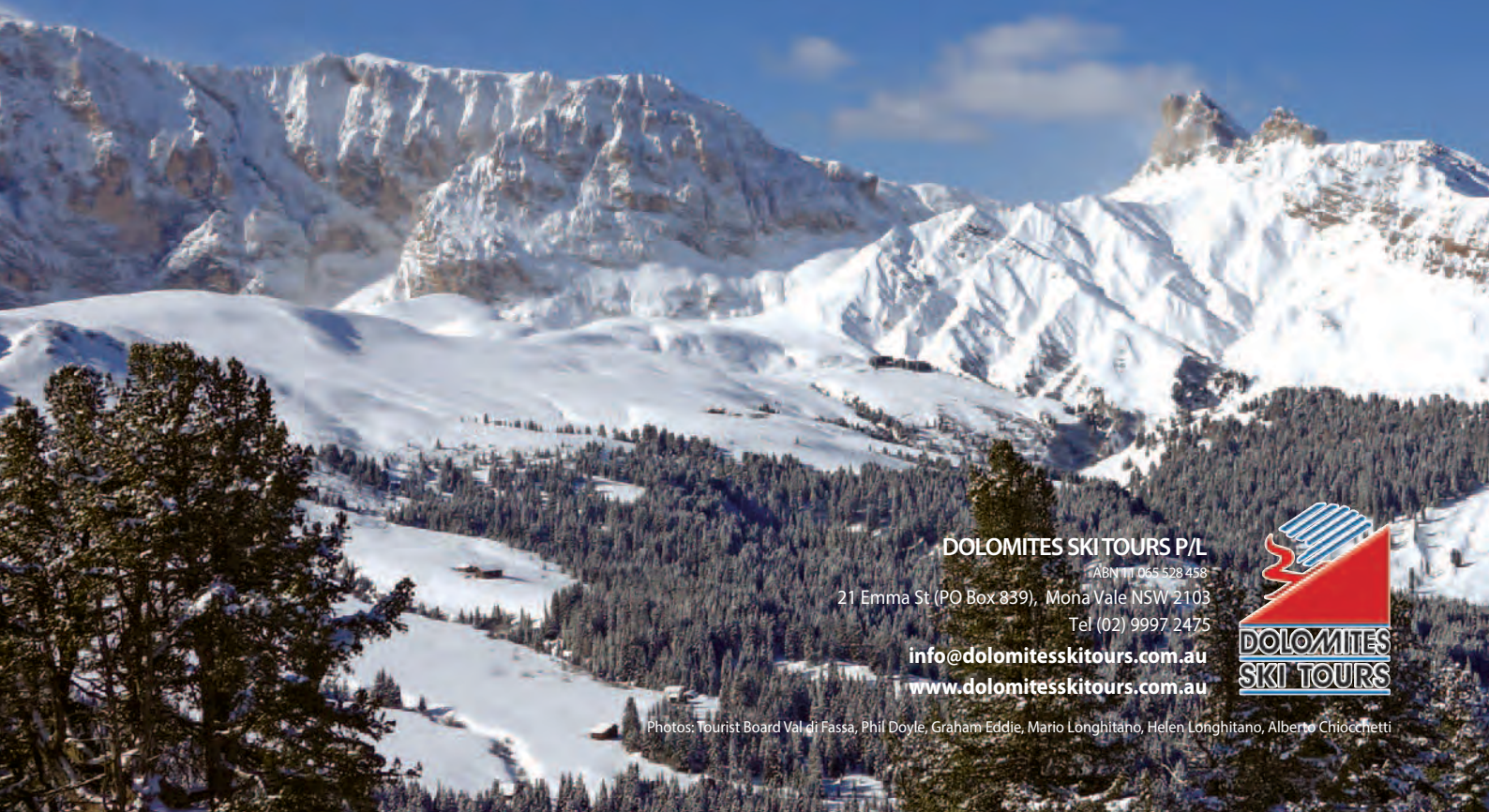
Have three, two & one bedrooms, two bathrooms, kitchen with cook top and microwave oven, dishwasher, Wi Fi, living / dining area, satellite TV, balcony and laundry facilities linen and towels are included as well as energy charges and final cleaning. The owners live on the premises and speak English. The apartments are located in the centre of Canazei close the shops, supermarket, restaurants, cafes etc.



The Italian Dolomites – The world's largest ski region and more



Scenery • Tradition • Culture • Food • Wine • History • Adventure



DOLOMITES SKI TOURS P/L

ABN 111 065 528 458

21 Emma St (PO Box 839), Mohn Vale NSW 2103

Tel (02) 9997 2475

info@dolomiteskitours.com.au

www.dolomiteskitours.com.au



Photos: Tourist Board Val di Fassa, Phil Doyle, Graham Eddie, Mario Longhitano, Helen Longhitano, Alberto Chiochetti